



# Halloween Tunnel Card Instructions



Bluering Prints



# TUNNEL CARD INSTRUCTIONS

You can find the video tutorial for these cards on my  
YouTube Channel at

<https://youtu.be/6CktyEZQAsc>

I use the bookstore card for this tutorial, but all the  
cards are built the same. Any differences in assembly will  
be noted in this PDF.

**PRINT THE BACK PANEL (4.PNG) ON THE BACK OF 5.PNG.  
THIS PIECE CAN BE HAND CUT.**

I recommend printing on 140lb. watercolor paper for a nice  
sturdy finish.

Depending on your printer, you may have to use the rear  
tray to insert the watercolor paper.

If your printer allows, change your media setting to matte.  
This makes for a flawless print on watercolor paper.

You can cut the pieces by hand with small scissors or an  
X-Acto knife, but a cutting machine (Cricut or Silhouette) will  
give you the cleanest results. I've included Cricut  
instructions, but since I don't use a Silhouette I'm not able  
to answer questions about that.

If cutting by hand, be sure to print everything at 100%

If you don't want to see white edges on your pieces, you can  
use a Sharpie or small paintbrush to go over them so they  
match the piece.



# CRICUT INSTRUCTIONS

These instructions are for printing and cutting using 140lb. watercolor paper. For heavy cardstock, use your the Cricut settings for heavy cardstock.

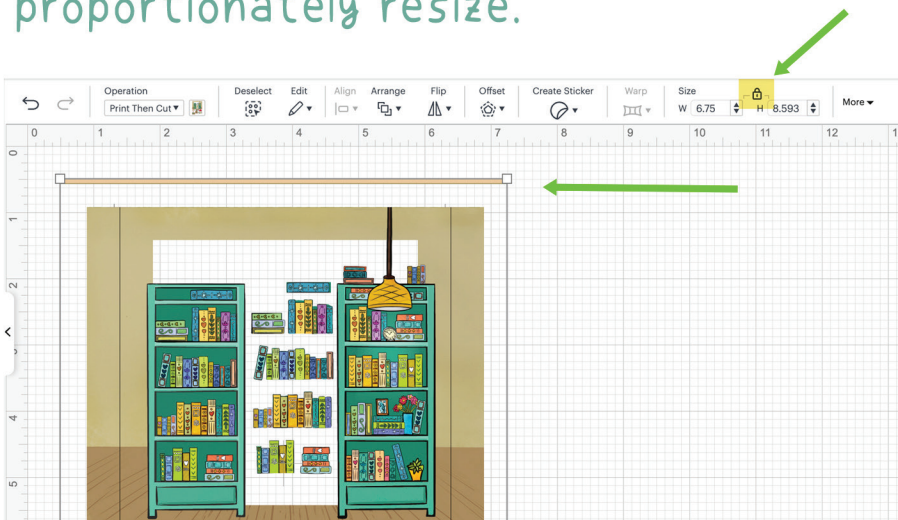
Use the Print Then Cut function on the Cricut.

Upload the .png images to Cricut Design Space and add them to your canvas.

Each image has a line at the top so that you can resize correctly.

Make sure the dimensions are locked.

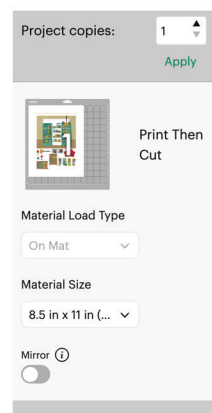
Change the width to 6.75 inches. Your image will proportionately resize.



Click

Make

Make sure these  
are your settings:



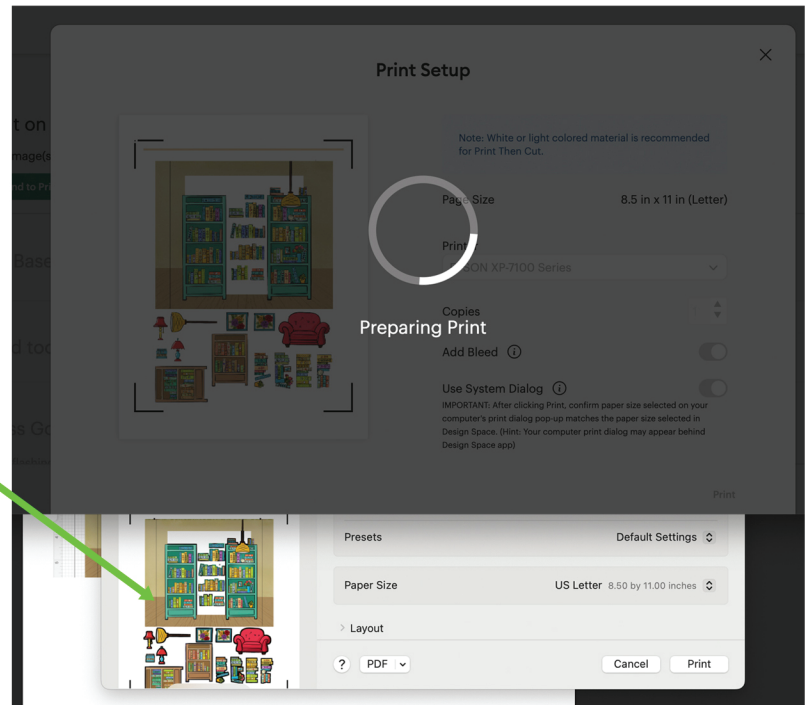
Click

Continue

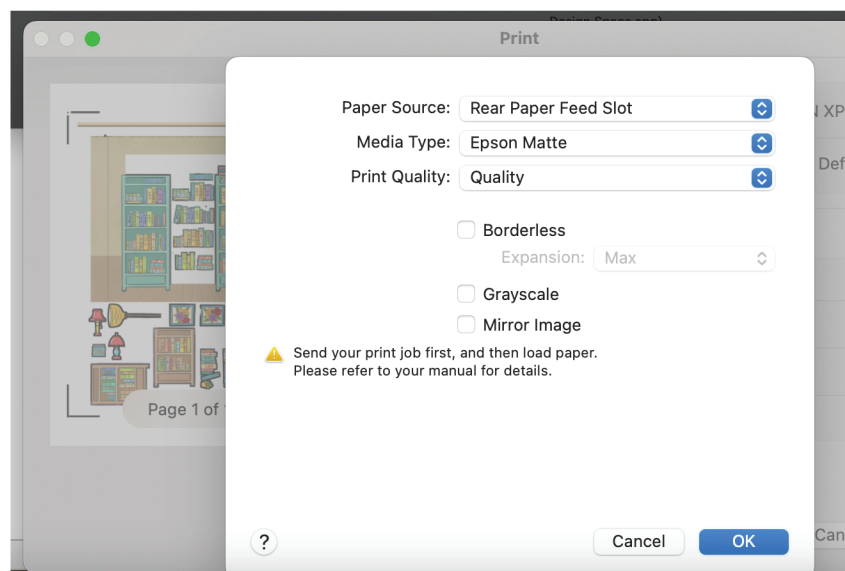
To adjust your printer settings, make sure the "Use System Dialog" button is toggle ON and the Cricut Design Space window is NOT full screen. Your system dialog will open underneath the Cricut Design Space app.

Click 

You'll see your printer window here, underneath the Cricut Design Space window. Click on it so the window comes to the front.



Yours will look different depending on what printer you are using. If you're using heavy watercolor paper (recommended), choose the rear paper feed slot for the paper source (or whatever paper source is recommended for heavy card stock for your printer).



If you're using watercolor paper, choose a matte paper for your media type.



For watercolor paper, set your base material to POSTER BOARD and your pressure to MORE.

① Printed

② Base Material set to: **Poster Board**

Bookmarked

Popular

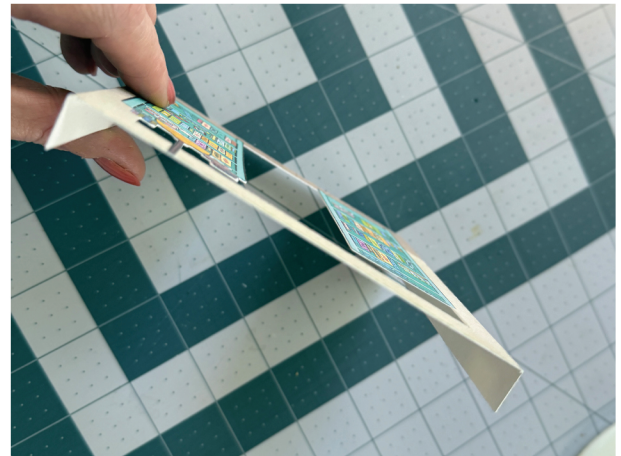
[Browse All Materials](#)

<b>Paper</b> Printable Sticker Paper, White (Gray Liner Printing)	<b>Vinyl</b> Adhesive Foil	<b>Vinyl</b> Matte Vinyl	<b>Vinyl</b> Flexible Stencil Film	<b>Cardstock</b> Kraft Cardstock	<b>Cardstock</b> Heavy Cardstock - 100 lb (270 gsm)
<b>Other</b> Washi Sheet	<b>Iron-On</b> SportFlex Iron-On	<b>My Materials</b> JACQUE STENCIL	<b>Iron-On</b> Heat Transfer (non-Cricut)	<b>Vinyl</b> Printable Vinyl, Specialty (Gold/Silver)	<b>Art Board</b> Poster Board

## Assembly

Score and crease each panel on the lines.

Fold the sides of the back panel (4) towards the front and fold the rest of the panel sides (1, 2, 3) to the back.



Add the individual pieces to the panels.



Use foam stickers to make pieces stand out from the panel.

## Reference images

● = attached with foam sticker

1



2



3

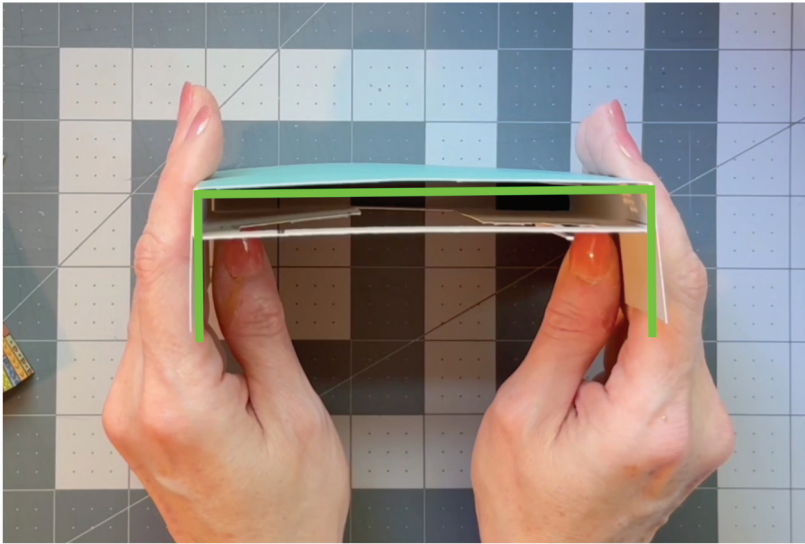


4



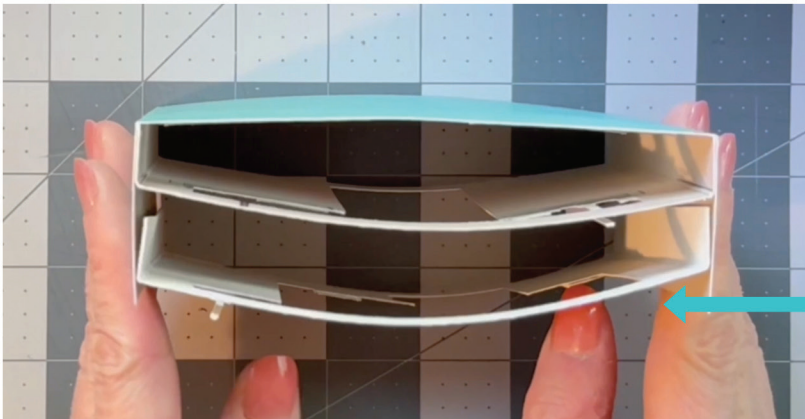


## Attaching panels



Before gluing in your panels, make sure that they fit properly.

The sides should come straight out. If they don't, the panel will bow when you add more.



If the panel doesn't fit properly, rescore and recreate either your back panel or the inside panel.

**BOWED!**

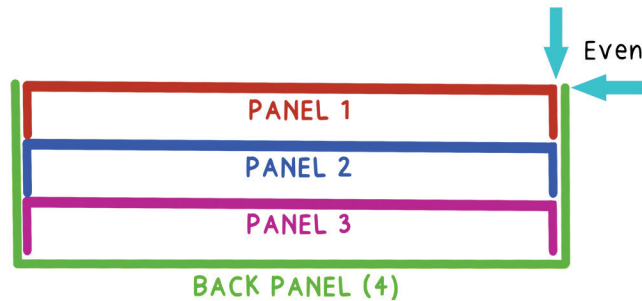
The sides of the inner panels should be folded to the back. Glue the sides of panel 3 to the sides of panel 4 (the back panel), making sure it sits against the back of panel 4.

Glue panel 2 in next. Make sure it sits against panel 3.



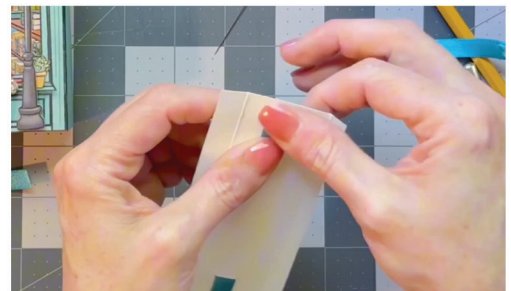
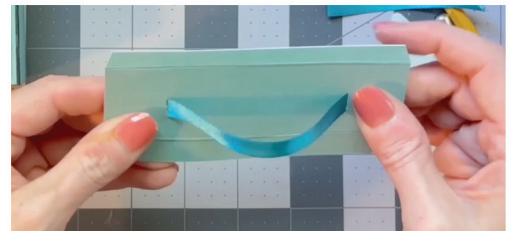
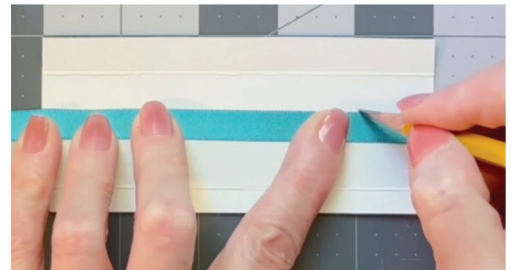
## Attaching panels

For the front panel (PANEL 1), make sure the front of the panel is even with the edges of the back panel. If it's not even, trim the sides so it fits correctly.

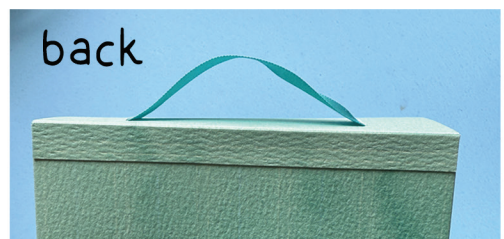
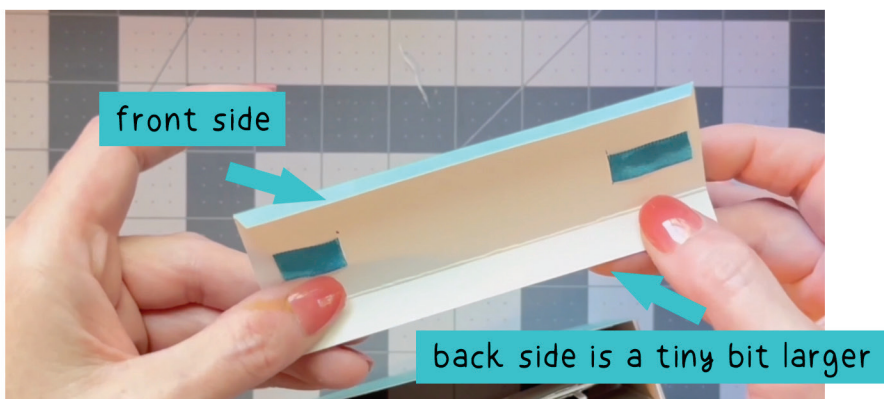


## Top of card

To create a handle, measure your ribbon and cut slits 1 inch from the edge of the top piece to insert the ribbon. Glue the edges down.



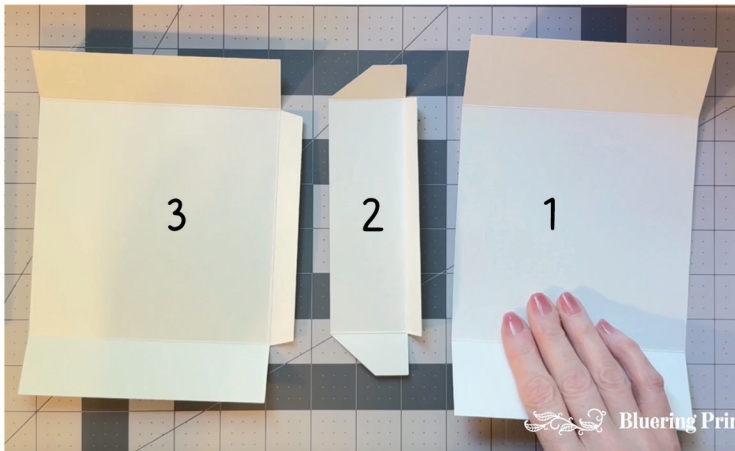
Glue the back to the outside to the back of the card, blue the front to the inside of the front of the card.





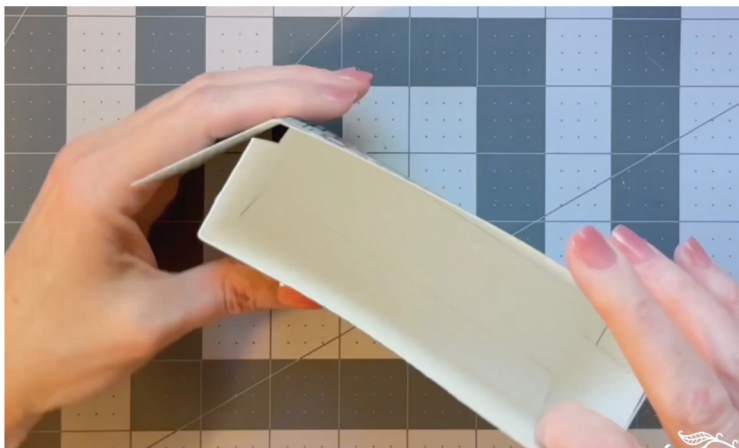
## Box

The box has 4 pieces. Glue the tabs to the blank side in this order. Make sure that tab 2 (the bottom) is glued to the bottom of the front of the box so your box front isn't upside down.



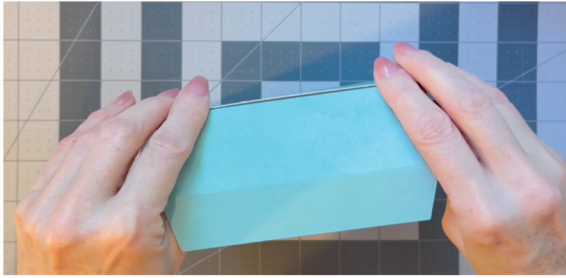
The tabs on piece 2 are glued to the outside of the sides of 3

The sides of the front (1) are glued to the outside of the box.



## Box

The back of box lid is glued to the inside.



The the front of the lid can be tucked in, or you can add a magnet closure.

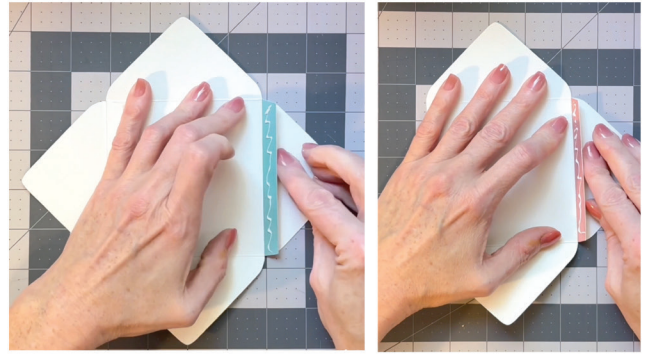


Glue your greeting on the front of the box.

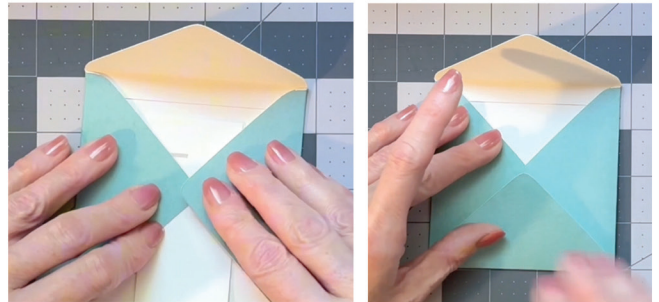


## Envelope

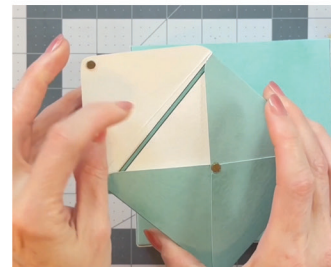
Glue the sides to the center.



Glue the sides together and then fold the bottom up and glue.



Add a magnet if you would like.



Glue the moon and witch to the envelope flap and glue the envelope to the back of the box.

